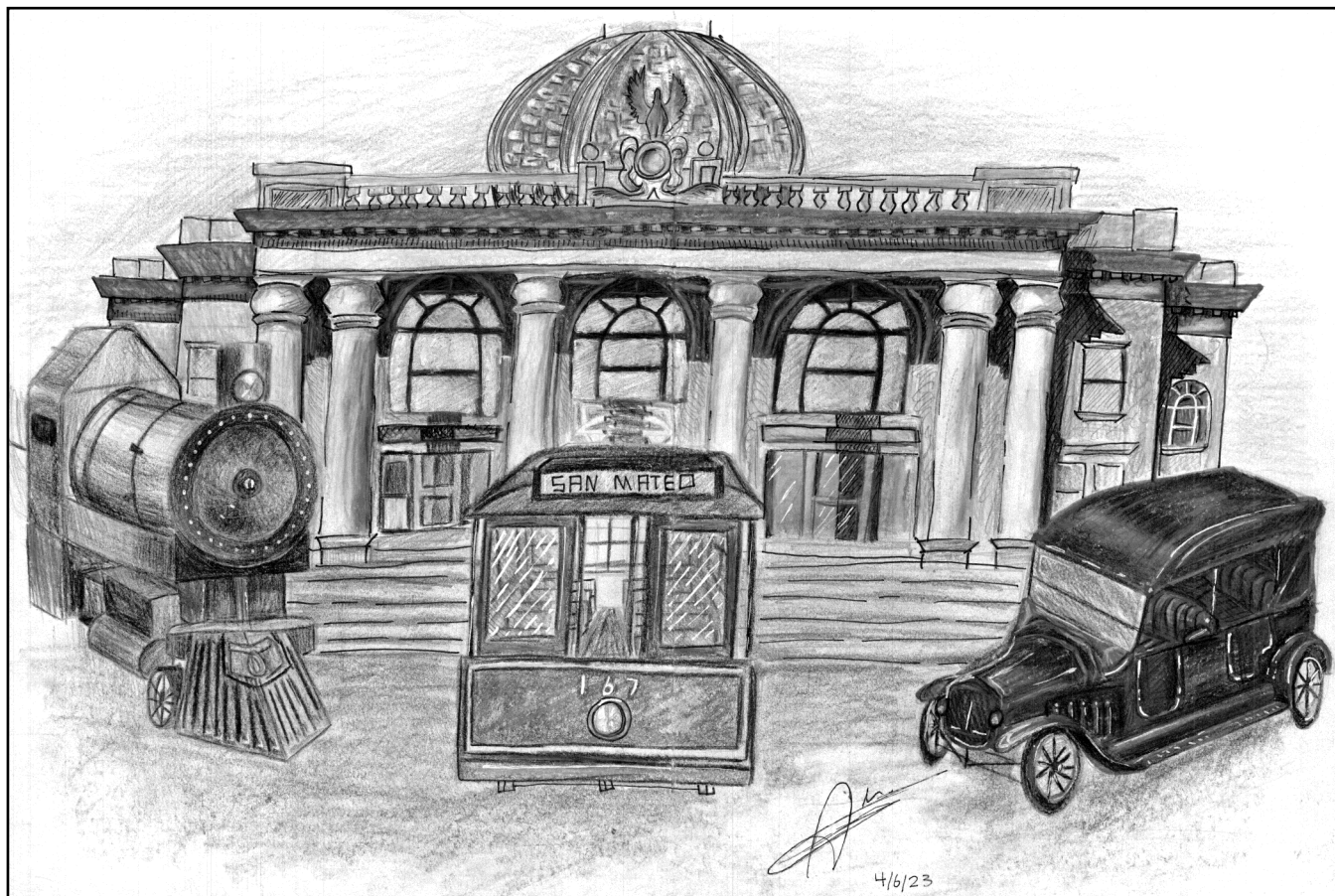


Discover



San Mateo County in the 1900s

Credits

Happy San Mateo County Day

On May 12, 1856, the election to organize the new San Mateo County took place. Held in May, Happy San Mateo County Day serves as a birthday celebration for the county.

Discover San Mateo County in the 1900s is intended to encourage children of all ages to explore what life was like in the Aughts (the decade of 1900-1909).

Sponsored By



Discover San Mateo County in the 1900s
Created by Carmen J. Blair and Carolyn Welter
Computer Illustrations by Lois Paul White

Front cover: *Automobiles in the 1900s* by Alicia Alvarado. Winner of the Happy San Mateo County Day Poster Contest, Ages 12-18.

Back cover: *CA* by Allynna B. Soe. Winner of the Happy San Mateo County Day Poster Contest, Ages 11 and under.

Copyright © 2023 San Mateo County Historical Association



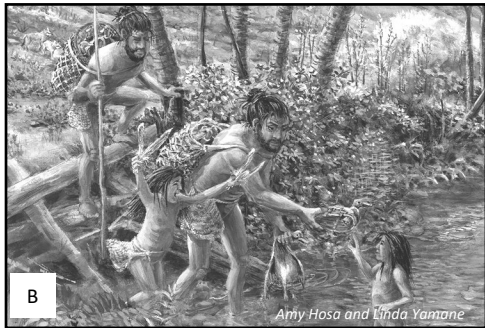
San Mateo County Historical Association
2200 Broadway, Redwood City, CA 94063
(650) 299-0104 www.historysmc.org

Before 1900

People have lived on the Peninsula for thousands of years. Put the letter for each event in order on the timeline.



A
Irish immigrants from around the Bay Area took the train to gatherings.



B
The Ohlone hunted animals such as ducks and deer for thousands of years.

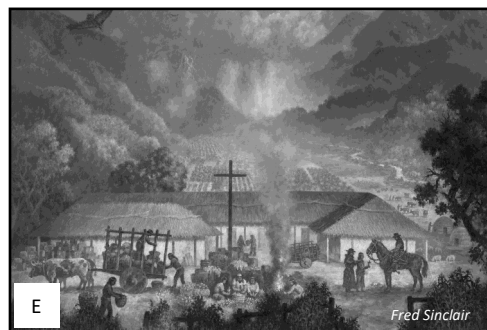


C
The first commuter train ran between San Francisco & San Jose.

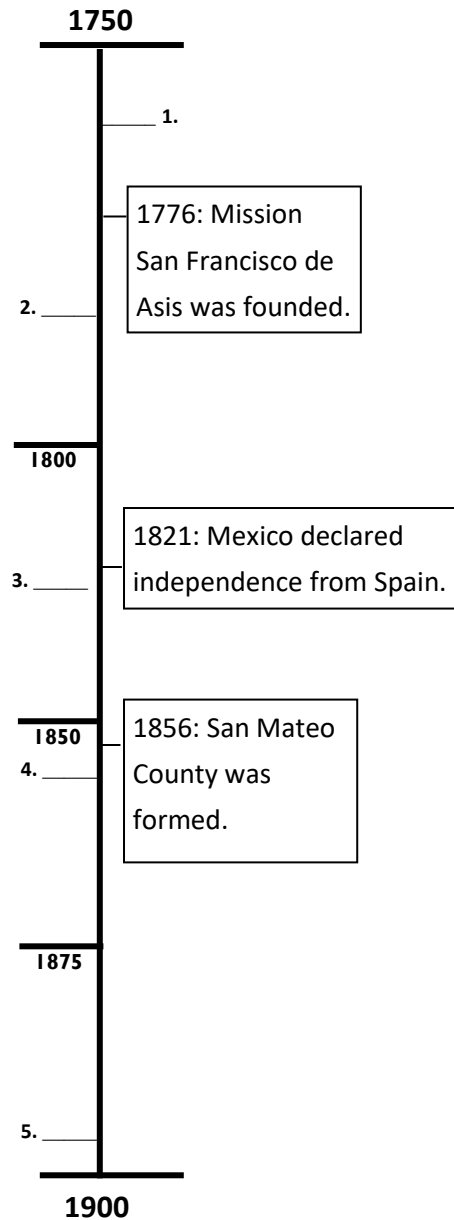
Images
SMCHA
Collection



D
Mexican rancho owners raised cattle for the hide and tallow.



E
Spanish mission farms were started on the Peninsula



Stagecoach

Stagecoach service continued from San Mateo and Redwood City to the Coast until 1909. Decode the message to learn more about a 1905 stagecoach event.



A stagecoach trip on the San Mateo County Coast, November 1909.

A	B	C	D	E	F	G	H	I	J	K	L	M	N	O	P	Q	R	S	T	U	V	W	X	Y	Z
1							21							12	10	14					8				

23 16 1 9 0 5 , H A S S A O A H
 20 21 7 19 1 14 20 14 20 1 25 7 26 12 1 26 21

 O H A O H
 9 12 17 17 7 9 5 21 1 6 6 7 16 7 15 12 16 20 21 7

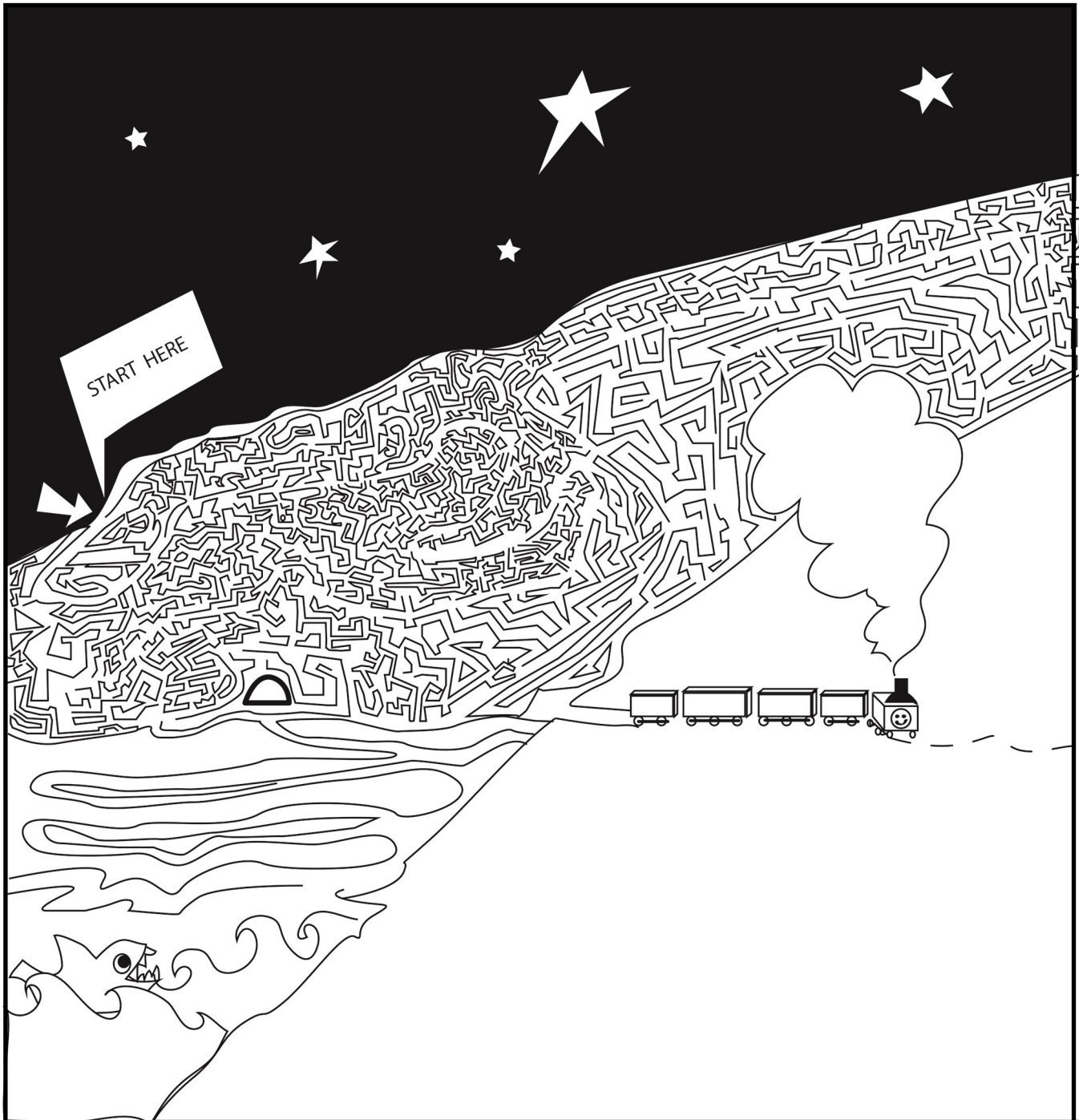
 S A A O - H A O O A
 14 1 16 2 1 20 7 12 21 1 19 3 2 12 12 16 17 1 5

 O A H O O S S
 9 12 1 15 20 21 7 9 12 17 17 7 9 25 12 20 19 7 14 14

 H A V O A S .
 20 21 1 16 3 23 8 7 15 12 19 19 1 9 14

Train

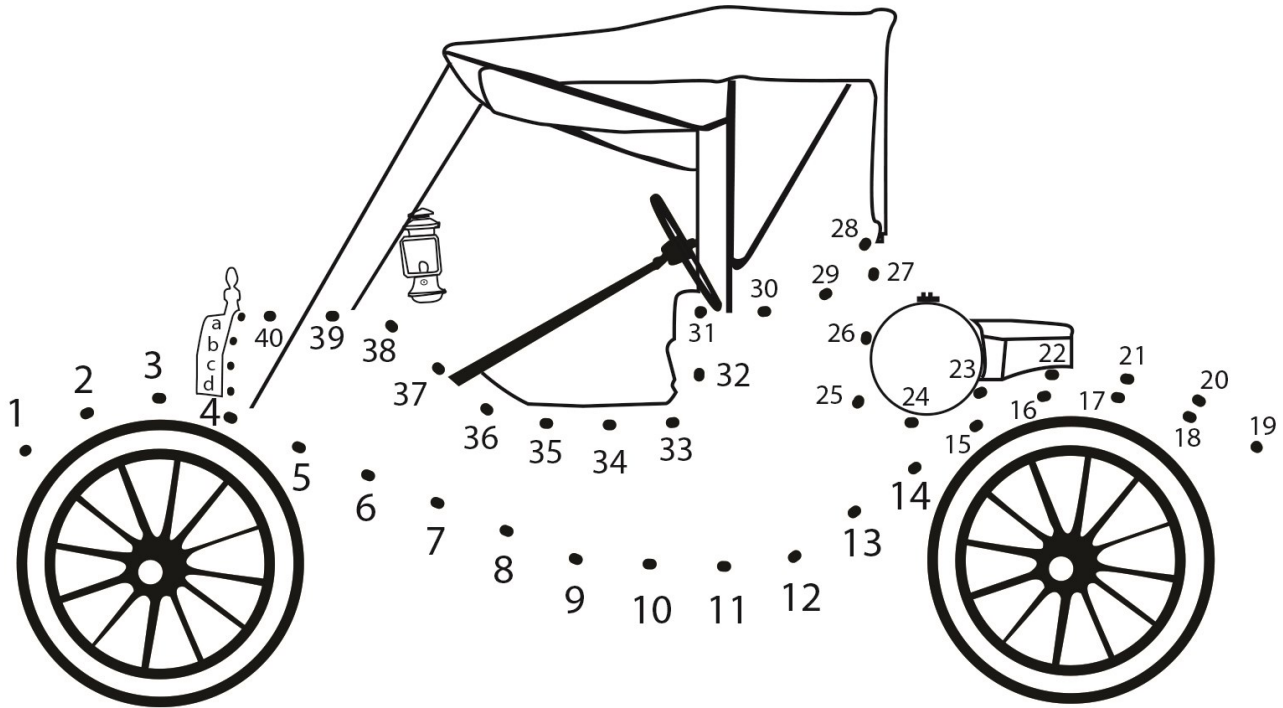
Help the train find its way through the maze.



Construction started on the Ocean Shore Railroad in 1905 with service planned between San Francisco and Santa Cruz. Due to the 1906 Earthquake, there was a break in service between Tunitas and Swanton.

Automobile

Connect the dots to see the Model T.



MODEL T FORD

Henry Ford introduced the Model T in 1908. It was manufactured on a moving assembly line at Ford's Michigan plant. The mass production allowed Ford to sell the car for as low as \$260. The goal was to have a car that was affordable, simple to operate and durable.

This meant that there were more cars on the road by the end of the decade, but there were also many carriages. Some of the earliest businesses working on cars also worked on carriages.

Andrew Smith Co.

Carriage and Automobile Works

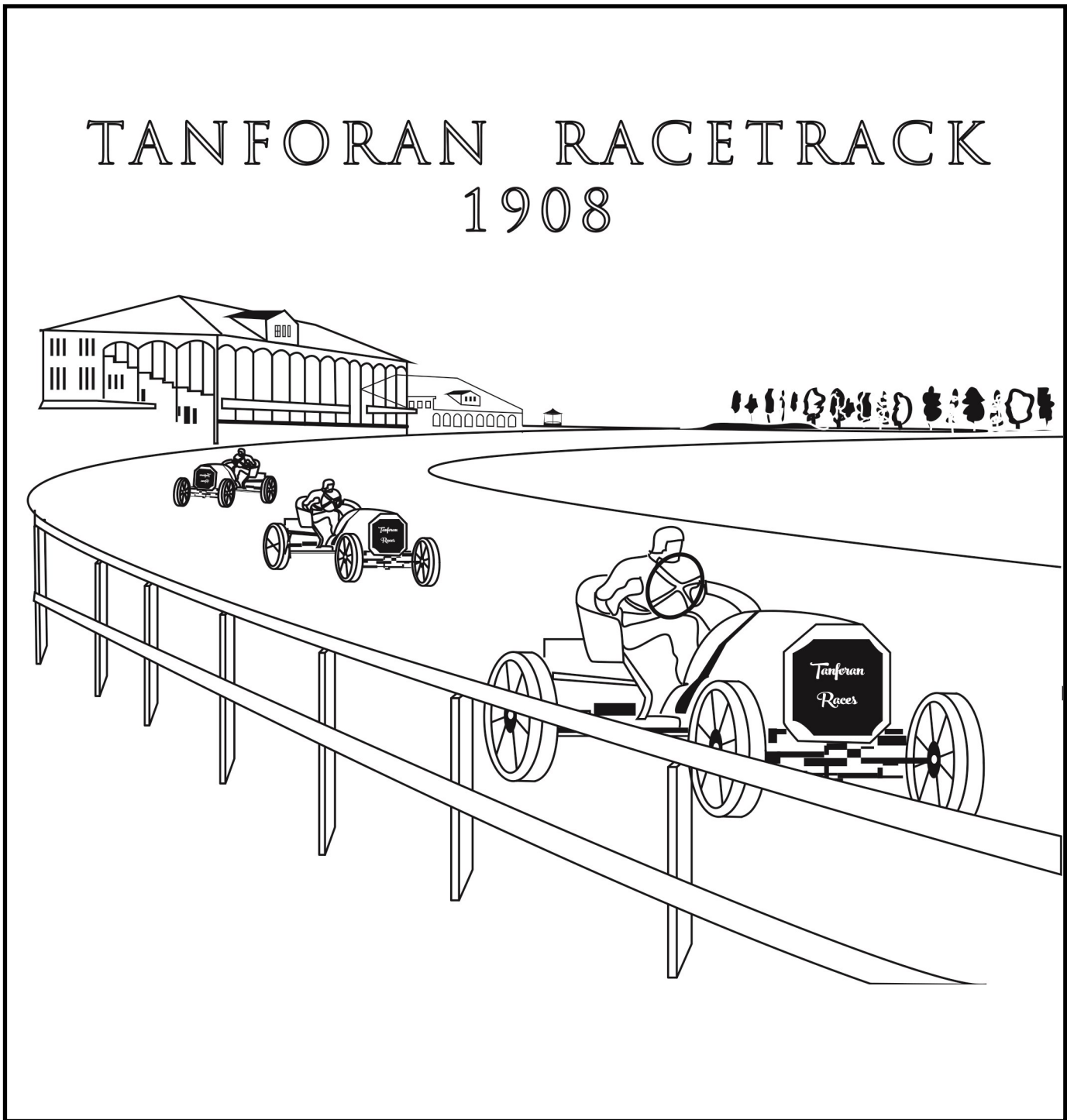
Diamond Tires Batteries Charged Prest-O-Light

San Mateo, Cal. Telephone 162

Burlingame Advance, October 30, 1909

Automobile

Color Tanforan Racetrack.



Tanforan Park was originally built for horse races. In 1903, car and motorcycle racing started at the San Bruno racetrack. By 1907, it was attracting the best drivers.

Slang

Slang is part of teen culture. Match the slang to the definitions. Are any of them still used?

Slang Terms and Phrases

Curtains	Earful	Noodle
Cushy	Ice	Rinky-dink
Doll Up	Jinx	Side-kick
Doodad	Live-Wire	Skiddoo
Doohickey	Lollapalooza	Wisenheimer



Mutt: A dog.

1. To leave _____
2. An exciting person _____
3. Easy or simple _____
4. Diamonds _____
5. Person thinks he is smartest _____
6. The head _____
7. Dress up _____
8. Something that's bad luck _____
9. Run-down or old _____
10. A lot of gossip _____
11. A decorative item _____
12. Someone always with another _____
13. Something excellent _____
14. An item with unknown name _____
15. The end _____

Newspapers

Create your own newspaper with articles, pictures and advertisements.

The Burlingame Advance		
VOL. I	BURLINGAME, CALIFORNIA, APRIL 7, 1906	NO. I.

By the end of the Aughts, many towns in the county had their own newspaper. Among them were *The Burlingame Advance* (starting in 1906) and *The San Bruno Banner* (starting 1909).



Earthquake

Unscramble the words. Then, use the answers to fill in the blanks in the sentences.



Courthouses after the earthquake, SMCHA Collection.

HLAF OMON ABY

4

TFEE

5

CTRHREI

7 2

SDAM

1 3

RWOEDDO CYTI

6

1 2 3 4 3 5 6 7

1. The 1906 Earthquake measure 8.25 on the _____ scale.
2. The 3 deaths in San Mateo County all happened in _____.
3. There was no flooding because the _____ held.
4. Just about every building made of brick in _____, including the courthouse, was damaged.
5. The road across Crystal Springs Lake moved several _____ to the right.

Earthquake

Match the building to the picture of it after the 1906 Earthquake.



Earthquake images, SMCHA Collection.

_____ 1. St. Matthew's Episcopal Church, San Mateo

The interior of the church was smashed, but some of the stained-glass windows survived.

_____ 2. Levy Brothers Store, Half Moon Bay

By April 19, debris had already been hauled away from the former site of the store.

_____ 3. Levy Brothers Store, San Mateo

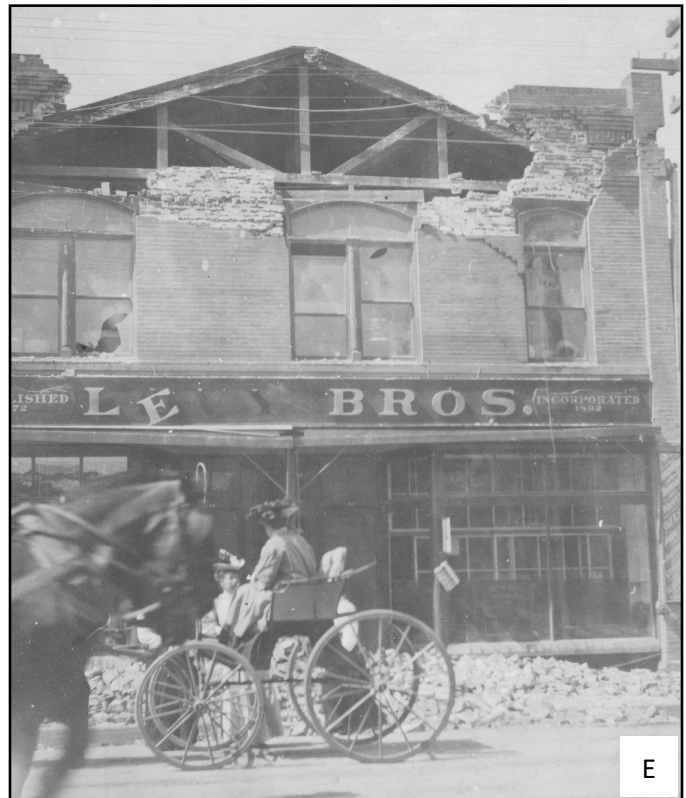
It lost bricks from the second floor, but the first floor had little damage.

_____ 4. Sequoia Union High School, Redwood City

The new high school had lost much of its roof and second story.

_____ 5. Library Hall, San Mateo

The brick, two story building was destroyed while the wood frame building next door was untouched.



Growth

Color the picture.

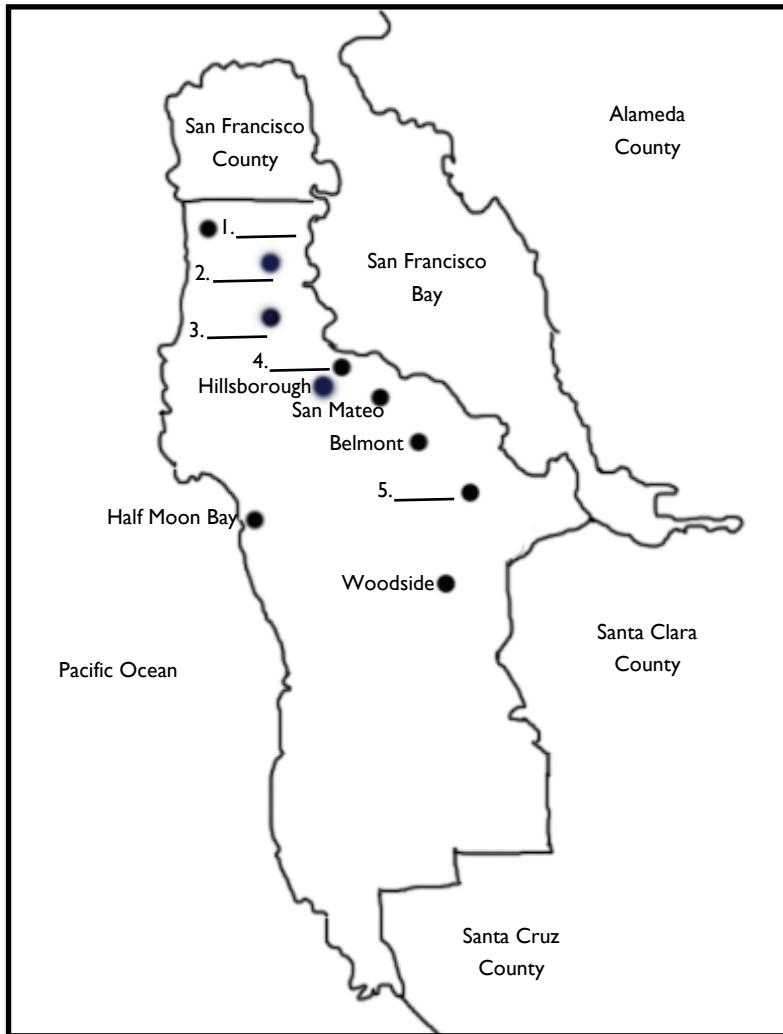


Refugees from the 1906 Earthquake left San Francisco and came to the Peninsula. Many of them lived, at least at first, in tents crowded with what they could bring with them from their former homes.

If you had to leave home, what would you bring with you?

Growth

Only two towns in the county were incorporated before 1900. People moved to the Peninsula after the 1906 Earthquake, causing towns to grow. Two towns incorporated during the decade.



Write the name of the town in the blank below. Then, put the letter in the correct blank on the map.

- A. While it incorporated in 1867, this city had construction after the earthquake to replace damaged buildings including the courthouse. _____
- B. A tent city developed on farm land belonging to John Daly. The town that developed was named after the farmer. _____
- C. Nicknamed the Industrial City, this north county town incorporated in 1908. _____
- D. Another tent city grew in an area once scouted by Spanish explorer Bruno de Heceta. _____
- E. This Hillsborough neighbor was known for its Country Club and sporting activities. It incorporated in 1908. _____

Immigrants

Read the story about immigrants. Then, find the underlined words from the story in the puzzle.

The wave of immigration that began in the 1800s continued into the 1900s. There was a rise in immigrants from Italy and Japan, while the number of immigrants from Ireland and Germany stayed about the same.

Discrimination is when people unfairly treat some individuals worse than others because of their culture or their appearance. This was seen when the Chinese Exclusion Act of 1882 was made permanent in 1902. This act did not allow people from China to immigrate to the United States until it was repealed in 1943.

Many immigrants worked to support their community. In 1906, a group of Japanese people in San Mateo County formed their own branch of the Japanese Association of America, an aid society that was created to help Japanese immigrants in need. They may have helped Japanese people find jobs or work with the government.

Immigrants brought with them many important parts of their culture, including holidays, recipes for delicious food that have been passed down for generations and stories of the past that give us a different view of life.



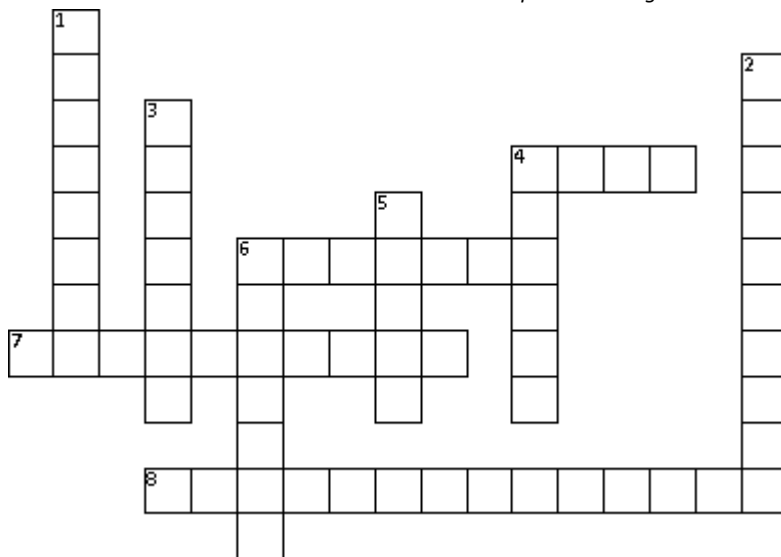
Italian immigrants arrive at Ellis Island, c. 1900. SMCHA Collection.

D	U	N	W	I	J	I	C	X	Y	B	H	G	G	E
E	I	S	O	O	R	U	T	T	Q	W	W	E	Y	R
T	Y	S	B	I	L	E	N	A	N	M	N	R	T	M
I	S	S	C	T	S	U	L	D	L	E	J	M	I	I
N	D	E	U	R	O	U	E	A	R	Y	A	A	N	M
U	Q	R	I	C	I	L	L	A	N	L	P	N	U	M
B	E	H	R	R	A	M	T	C	U	D	A	Y	M	I
Q	V	J	C	E	O	I	I	W	X	Z	N	T	M	G
R	C	R	P	W	O	T	A	N	C	E	P	L	O	R
O	Z	E	O	N	X	O	S	H	A	Z	Q	I	C	A
K	R	X	S	O	R	C	V	X	Q	T	Q	F	B	T
T	N	E	M	N	R	E	V	O	G	K	I	R	A	I
H	O	L	I	D	A	Y	S	B	P	W	L	O	Y	O
O	I	E	P	Y	T	E	I	C	O	S	G	Q	N	N
P	D	O	O	F	T	A	X	H	B	R	A	N	C	H

Immigrants



4 Across: Japanese immigrants worked here, SMCHA Collection.



Word List

Artichokes	Oregano
Broccoli	Oysters
Chrysanthemums	Restaurant
Grocery	Salt
Hardware	Shrimp
Laundry	Stone
Leather	Tulips
Milk	Violets

Use the word list to answer the clues about businesses in which immigrants worked.

Across

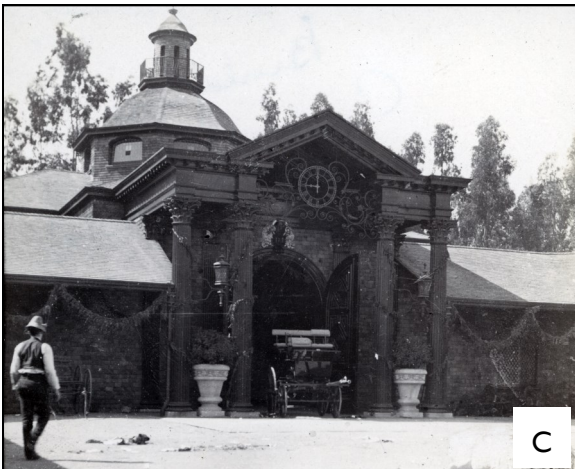
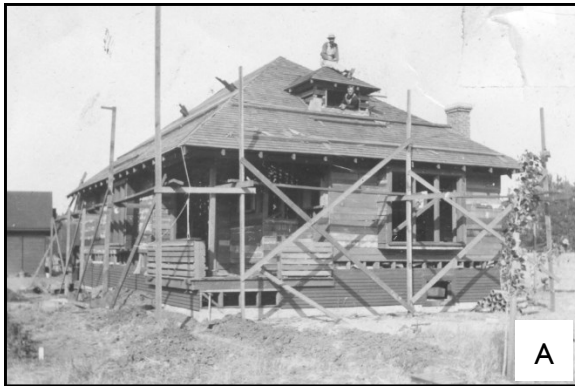
- Japanese immigrants worked at the Leslie _____ Company that produced a product from the San Francisco Bay used for seasoning food.
- Italian immigrants in Redwood City worked at Frank's Tannery producing _____.
- Portuguese immigrant Frank Duarte operated a _____ where customers could eat lunch in Pescadero.
- Japanese immigrant Sadakusu Enomoto dominated the industry growing this roundish flower.

Down

- From an Irish Family, Robert and William Wisnom opened a _____ store in 1905 that sold hammers and nails.
- In the Half Moon Bay area, Italians grew 1,500 acres of this green vegetable.
- Italian farmers sent these flowers, named for their color, to the World's Fair in St. Louis in 1904.
- Chinese immigrants fished for this shellfish in San Francisco Bay.
- Valerio Fontana was an Italian _____ cutter that came to the Bay Area after the 1906 Earthquake to make monuments.
- In 1908, Japanese immigrant Tetsuo Yamanouchi opened the Imperial _____ to provide locals with clean clothes.

Buildings

Match the people to their building. Write the letter of the building in the blank in front of the person's name.



___ 1. Harriett and Francis Carolan

In 1900, the Carolans completed a stable at Crossways Farm that included a clock tower. To celebrate the completion, the couple hosted a party and outlined the building in 7,000 electric bulbs.

___ 2. Ethel and William Crocker

The Crockers built their mansion, named New Place, in 1907. It featured columns in the Second Renaissance Revival style. It was about a mile from the Burlingame Country Club.

___ 3. Dorothy and Harry Regan

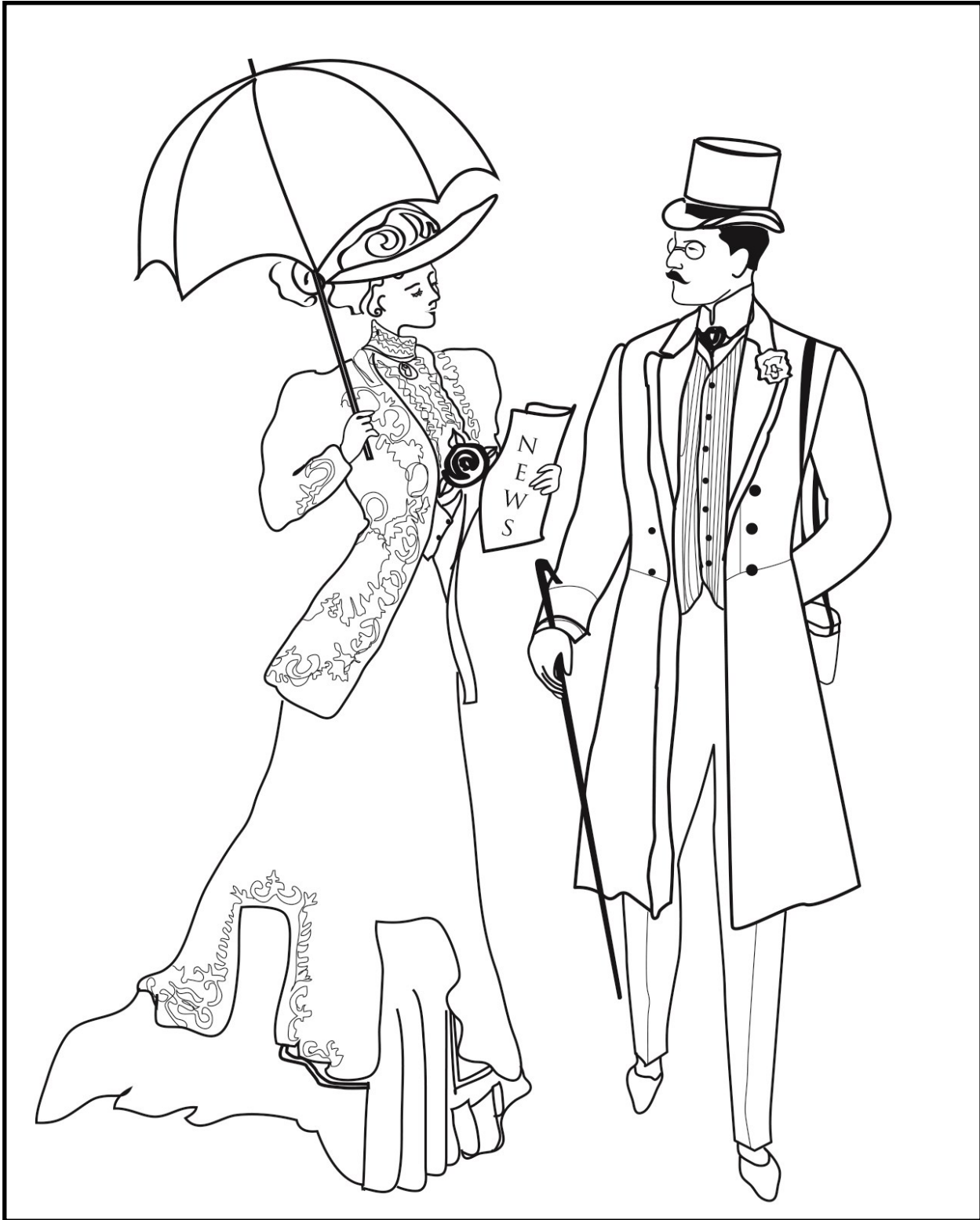
In 1906, the Regans decided to leave San Francisco and build a new home in Burlingame. Their new house was in the popular bungalow style, built to look like a rural cottage.

___ 4. Clorina and Amadeo P. Giannini

In 1905, the Gianninis purchased the Tudor Revival home that Philip Roedel had built in San Mateo in 1902. The style is known for showing designs in timber on the exterior.

Fashion

Color the picture.



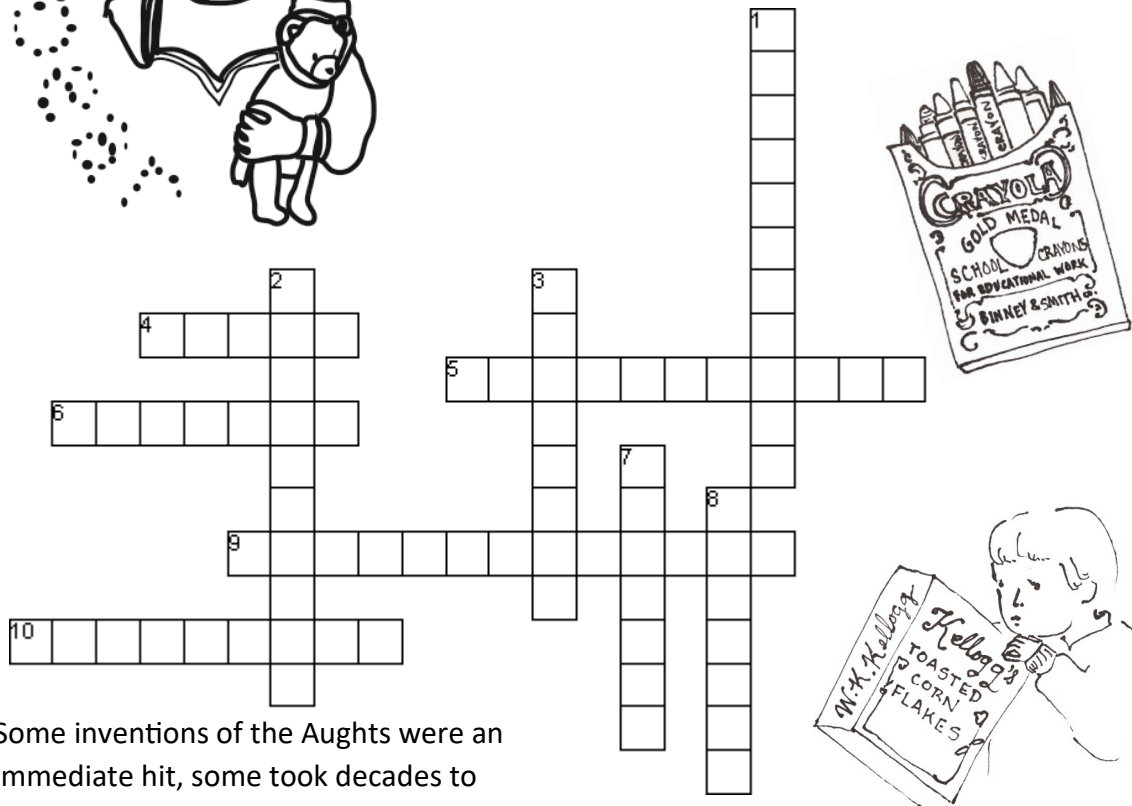
A fashionable couple out for an afternoon stroll. What are they wearing that people today do not wear when they walk around town?

Inventions

Finish the crossword puzzle to discover inventions of the Aughts.



Word List		
Airplanes	Crayons	Radio
Apple Pie	Hershey	Razor
Banana Split	Monopoly	Tea Bags
Coffee	Movies	Teddy Bear
Corn Flakes	Photography	Vacuum Cleaner



Some inventions of the Aughts were an immediate hit, some took decades to gain popularity. Which ones do you use?

Across

- With a safety _____, you can shave with a lower chance of cutting yourself.
- A _____ is a big dessert with ice cream, fruit and a cherry on top.
- Kids can use _____ to draw colorful pictures.
- A _____ allowed you to clean your floors a bit faster than you could with a broom.
- The _____ was invented after Theodore Roosevelt refused to kill an animal on a hunt.

Down

- Memories were no longer in black and white when color _____ was introduced.
- Kellogg's _____ make an easy breakfast.
- In the game of _____, players buy property and collect rent from their competitors.
- Before _____, you were only able to get the loose-leaf version of this beverage ingredient.
- If you just wanted a bite of chocolate, you could eat a _____'s Kiss.

Sports

Unscramble the words. Then, use the answers to fill in the sentences below.



The Burlingame Four (on the right) at the Carolans' Pavilion in Burlingame, SMCHA Collection.

LPOO

--	--	--	--

2

SRHOE ANIRCG

--	--	--	--	--	--

3

--	--	--	--	--	--	--	--

4

GIBOXN

--	--	--	--	--	--	--

BSLAAEBL

--	--	--	--	--	--	--	--	--	--

1

EBLCYISC

--	--	--	--	--	--	--	--	--	--

5

				t	
1	2	3	4	5	

1. Many towns in San Mateo County had their own _____ teams and they often competed against each other.

2. In 1907, the Burlingame Four won the California championship _____ tournament.

3. _____ became popular in Colma when the sport became illegal in San Francisco.

4. In May 1903, the Bay City Wheelman visited La Honda on their _____. The group participated in races throughout northern California.

5. _____ happened at Tanforan Park. In 1901, the prize money for the winners of one race was \$3,000.

Dances

Read the story about popular dances. Then, find the underlined words from the story in the puzzle.

The Aughts, the decade of 1900-1909, saw the introduction of many new dance styles. Ragtime came from musical styles that were created by African Americans. New ragtime songs included *Frog Legs Rag* and *Peaches and Cream Rag*. As people in other communities discovered new types of music, dances such as the One-Step became popular among younger individuals. Young people were no longer interested in the dances of their parents and grandparents and wanted something new.

There were also many new dances that were named after animals. The Bunny Hug, Camel Walk, and the Turkey Trot (which originated in San Francisco) often saw partners moving about the room imitating the animals they're named after.

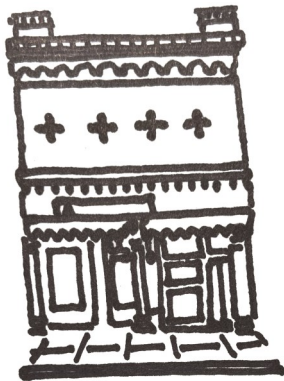
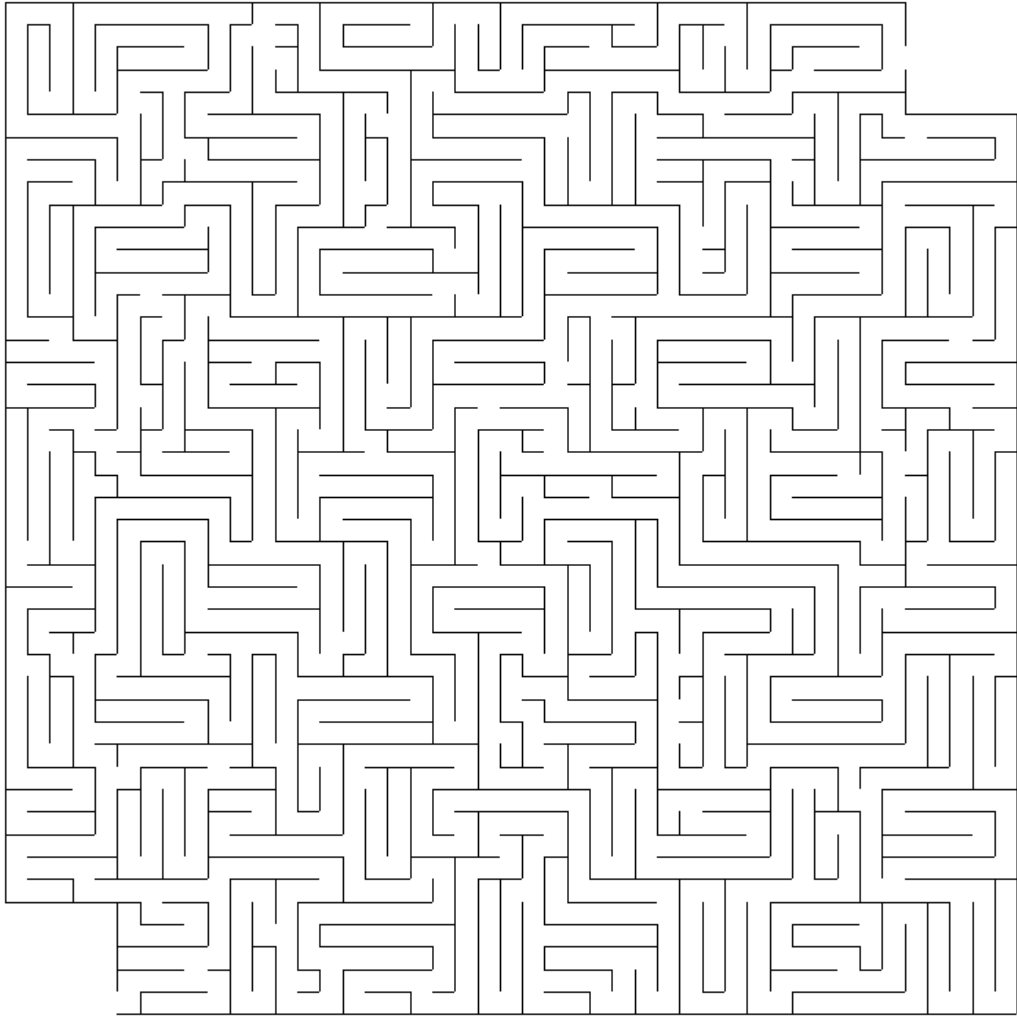
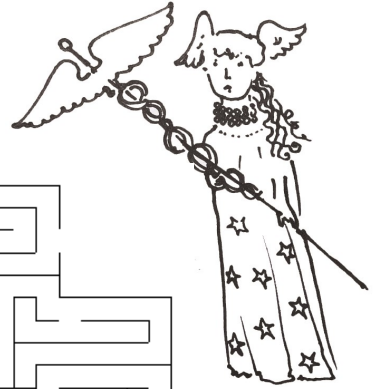
In this time, most dances involved people dancing in pairs rather than by themselves. Some of the dances of the era were so modern that some people thought they were not appropriate to perform. Many people did not like the Grizzly Bear because of how close the couples danced together. Many of these dances were the basis for ones that would come in the next few decades.



P C T S M A N L I O P D C V B
E A O U L O Z Q W C O A G V A
M M I N R A D I U S P N G A J
R E I O E K M E W I U C Y N N
O L K T L S E I R C L E W A W
F W I A G L T Y N N A S C T J
R A F D X A F E T A R I T O A
E L D S T C R W P R R P B R B
P K P E A C H E S F O D C U L
S R E N T R A P A N W T N S A
G R I Z Z L Y B E A R N T P C
S T N E R A P R E S Y H A L I
A X D E C A D E K H G I X V S
T S M G W T N P U U R D U Z U
A O P P K C H G A S U L H X M

Theater

Help the actress find her way to Redwood City's Alhambra Theater.



Redwood City's Alhambra Theater was one of the finest theaters built between San Francisco and San Jose. Owned by Charles Josselyn, it could seat 1,500 people. It had a large stage and fancy dressing rooms for the actors and actresses.

After 1909

Unscramble the words to discover what came to San Mateo County after the 1909. Use the marked letters to solve the second puzzle. Then, match it to the picture.

- ___ TWEAR

--	--	--	--	--
- ___ HIHGWYA

--	--	--	--	--	--	--
- ___ MRCEHANT MREAINS

--	--	--	--	--	--	--	--	--	--

--	--	--	--	--	--	--	--
- ___ ASN MATOE

--	--	--

--	--	--	--	--	--
- ___ PATENSU

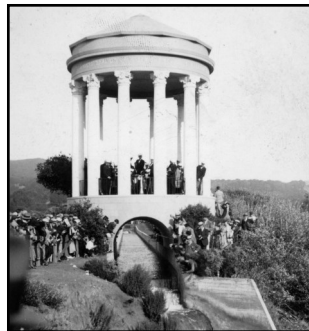
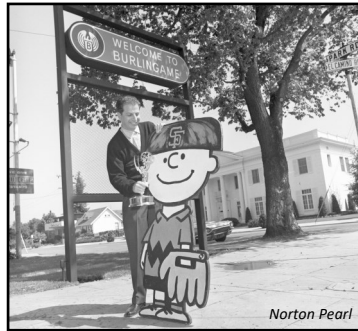
--	--	--	--	--	--	--	--

1	2	3	4

5	6

		x			?
7	8	9			

A. Lee Mendleson Productions in Burlingame produced specials featuring these cartoon characters starting in the 1960s



B. In 1934, this resource started flowing from Hetch Hetchy to San Mateo County. A monument was built to mark the place.



C. During World War II, these cadets trained at Coyote Point.



D. In 1929, the San Francisco Bay Toll Bridge opened. It went between this town and Hayward.

E. In 1912 in San Bruno, work began on the first paved section of the California _____ System.

Answers

Page 3

- B
- E
- D
- C
- A

A	B	C	D	E	F	G	H	I	J	K	L	M	N	O	P	Q	R	S	T	U	V	W	X	Y	Z
1	17	26	15	7	3	25	21	23	11	22	19	2	16	12	6	10	9	14	20	18	8	13	24	5	4

IN 1905, THE LAST STAGE COACH
23 16 20 21 7 19 1 14 20 14 20 1 25 7 26 12 1 26 21

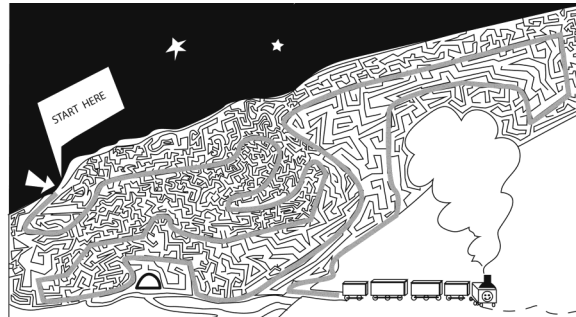
ROBBERY HAPPENED ON THE
9 12 17 17 7 9 5 21 1 6 6 7 16 7 15 12 16 20 21 7

SAN MATEO - HALF MOON BAY
14 1 16 2 1 20 7 12 21 1 19 3 2 12 12 16 17 1 5

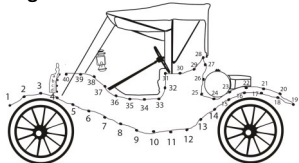
ROAD. THE ROBBER GOT LESS
9 12 1 15 20 21 7 9 12 17 17 7 9 25 12 20 19 7 14 14

THAN FIVE DOLLARS.
20 21 1 16 3 23 8 7 15 12 19 19 1 9 14

Page 5



Page 6



Page 8

- Skiddoo
- Live-Wire
- Cushy
- Ice
- Wiseneimer
- Noodle
- Doll Up
- Jinx
- Rinky-dink
- Earful
- Doodoo
- Side-kick
- Lollapalooza
- Doohickey
- Curtains

Page 10

- HLAF OMON ABY **H A L F M O O N B A Y**
- TFEE **F E E T**
- CTRHREI **R I C H T I E R**
- SDAM **D A M S**
- RWODEDO CYTI **R E D W O O D C I T Y**

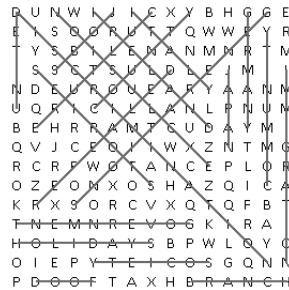
Page 11

- C
- D
- E
- B
- A

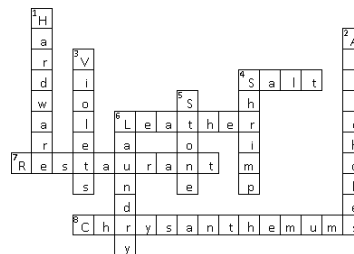
Page 13

- B, Daly City
- C, South San Francisco
- D, San Bruno
- E, Burlingame
- A, Redwood City

Page 14



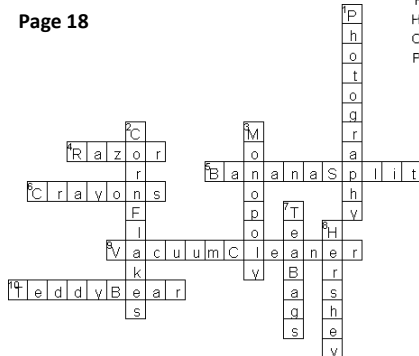
Page 15



Page 16

- C
- D
- A
- B

Page 18

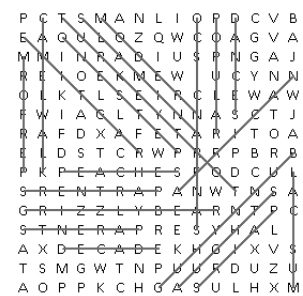


Page 19

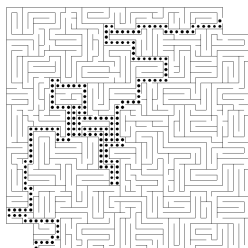
- LPOO **P O L O**
- SRHOE ANIRCG **H O R S E R A C I N G**
- GIBOXN **B O X I N G**
- BSLAAEBL **B A S E B A L L**
- EBLCYISC **B I C Y C L E S**

S P O R T S

Page 20



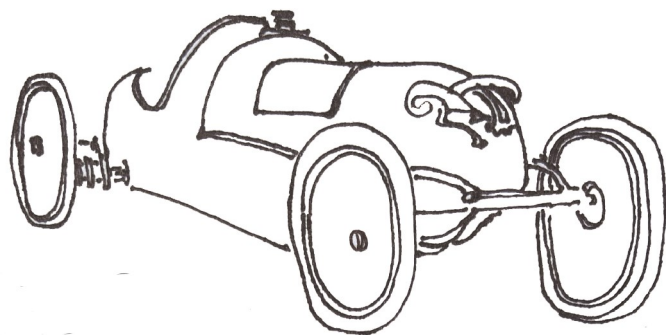
Page 21



Page 22

- B TWEAR **W A T E R**
- E HIHGWAY **H I G H W A Y**
- C MRCEHANT MREAINS **M E R C H A N T M A R I N E S**
- D ASN MATOE **S A N M A T E O**
- A PATENSU **P E A N U T S**

W H A T I S N E X T ?





The Aughts

The first decade of a century.

