

Happy San Mateo County Day!



Discover
San Mateo County
in the
1850s

Credits

Happy San Mateo County Day

When California became a state in 1850, San Mateo County was part of San Francisco County. In 1856, Governor John Neely Johnson signed the Consolidation Act creating San Mateo County.

The first San Mateo County election was held on May 12, 1856. In 2021, the San Mateo County Board of Supervisors adopted May 12 as Happy San Mateo County Day.

Discover San Mateo County in the 1850s is intended to encourage children of all ages to explore what life was like when the county was new.

Discover San Mateo County in the 1850s

Created by Carmen J. Blair

Cover art by Jennifer DiSanto.

Coloring Sheets on pages 6, 15, 16 and 18 by Marian Goodman.

Photographs from the San Mateo County Historical Association Archives.

Copyright © 2021 San Mateo County Historical Association

San Mateo County Historical Association
2200 Broadway, Redwood City, CA 94063
650.299.0104 www.historysmc.org

Before the 1850s

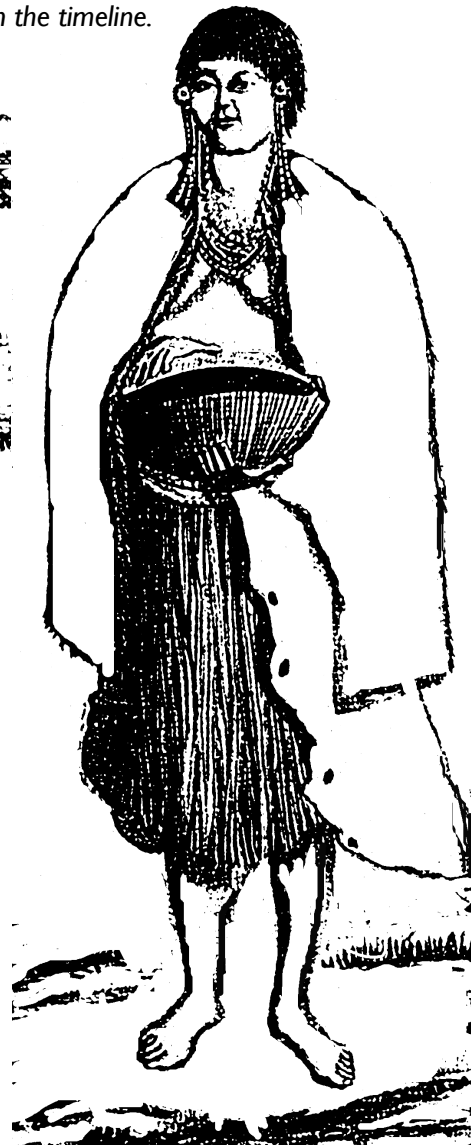
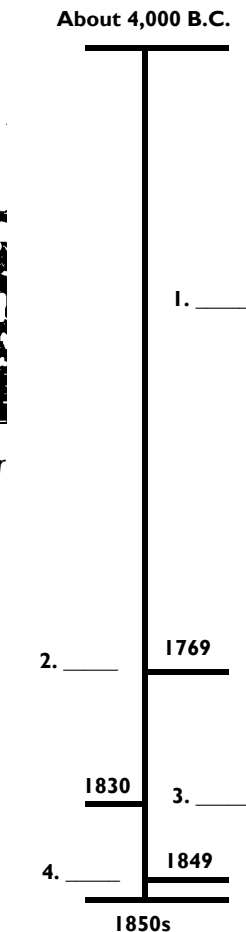
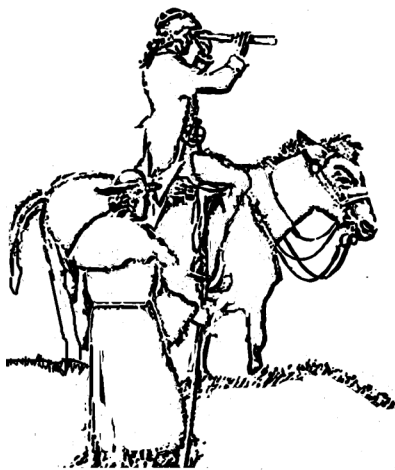
Color the pictures. Then, put the letter for each group in order on the timeline.



A. Mexican vaqueros roped cattle. Cow hides were called California dollars.



B. People rushed to California after gold was discovered. Many miners came to the San Francisco area.



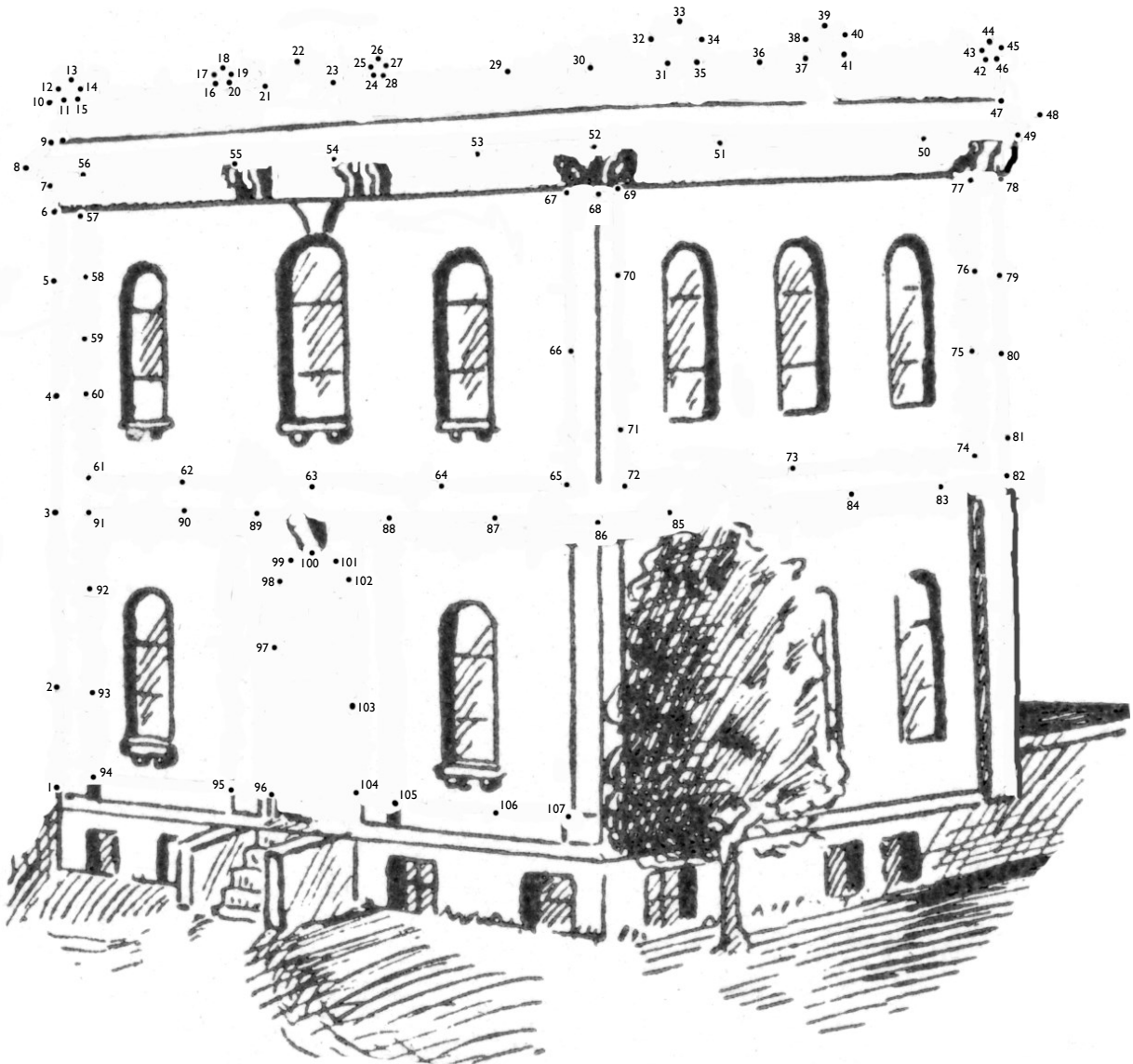
D. Ohlone women wore clothes made out of plants and animal hides. They made jewelry from shells.

Who lived here before it was called San Mateo County?

C. Spanish explorers first saw the San Francisco Bay from Sweeny Ridge. They had farms to support Mission Dolores.

Government

Connect the dots and discover what San Mateo County's first courthouse looked like.



When San Mateo County was formed in 1856, the Board of Supervisors rented space at J.V. Diller's Redwood City storehouse (right) to use for county offices. It took two years to build the first courthouse (above). The county jail was in the basement. The first floor had the courtroom and county offices. The second floor was used for meetings, dances and church services.



Government

Discover the job titles of the county's first elected officials by decoding the cryptogram. Find the letters for each number — some are filled in to give you a start. The job descriptions below also give some hints.

A	B	C	D	E	F	G	H	I	J	K	L	M	N	O	P	Q	R	S	T	U	V	W	X	Y	Z
26				19				25						21											

$$\begin{array}{r} \text{E} \quad \text{I} \\ \hline 14 \ 6 \ 19 \ 1 \ 25 \ 7 \ 7 \end{array}$$

$$\begin{array}{r} \text{E} \\ \hline 11 \ 13 \ 10 \ 24 \ 19 \end{array}$$

$$\begin{array}{r} \text{E} \ \text{A} \quad \quad \quad \text{E} \\ \hline 3 \ 1 \ 19 \ 26 \ 14 \ 13 \ 1 \ 19 \ 1 \end{array}$$

$$\begin{array}{r} \text{E} \quad \quad \quad \text{I} \quad \quad \quad \text{O} \\ \hline 14 \ 13 \ 15 \ 19 \ 1 \ 9 \ 25 \ 14 \ 21 \ 1 \end{array}$$

$$\begin{array}{r} \text{E} \\ \hline 8 \ 12 \ 19 \ 1 \ 20 \end{array}$$

$$\begin{array}{r} \text{A} \quad \quad \quad \text{E} \quad \quad \quad \text{O} \\ \hline 26 \ 14 \ 14 \ 19 \ 14 \ 14 \ 21 \ 1 \end{array}$$

Job Descriptions



Keeps official documents.



Member of a group that leads local government.



In charge of court cases.



Assesses or determines value of property.



Manages county's finances.



Chief law enforcement officer.

Did you know? In the county's first election in 1856, only men over the age of 21 could vote.

Houses

Color the picture.



What items from this home do you have?

Houses

Match the people to their house. Write the letter of the house in the blank in front of the person's name.

In the 1850s, people lived in many different kinds of houses. Some lived in adobe houses made out of mud bricks. The Spanish and Mexicans had built this kind of house in the area before 1850. Many Americans preferred to build wood houses.



___ **1. Maria Greer & Sons** **A**

From a Mexican family, Maria Soto Greer married an American. Their family soon outgrew their small adobe.



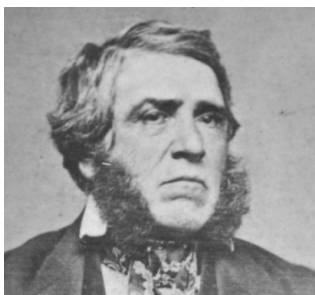
___ **2. James Johnston** **B**

A Gold Rush businessman, he wanted the house on his farm to look like his family's house in Ohio. It is an unusual style for the area.



___ **3. Cook Sisters** **C**

Elinor Cook (right) was the first American child born in San Mateo. Her father owned a stage stop. He built an American-style house for his growing family.



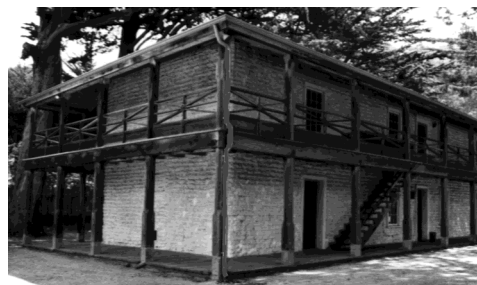
___ **4. Francisco Sanchez** **D**

A former alcalde or mayor of San Francisco, Sanchez and his large family lived in the adobe he built on his Mexican land grant.



___ **1. Agnes Poett Howard** **E**

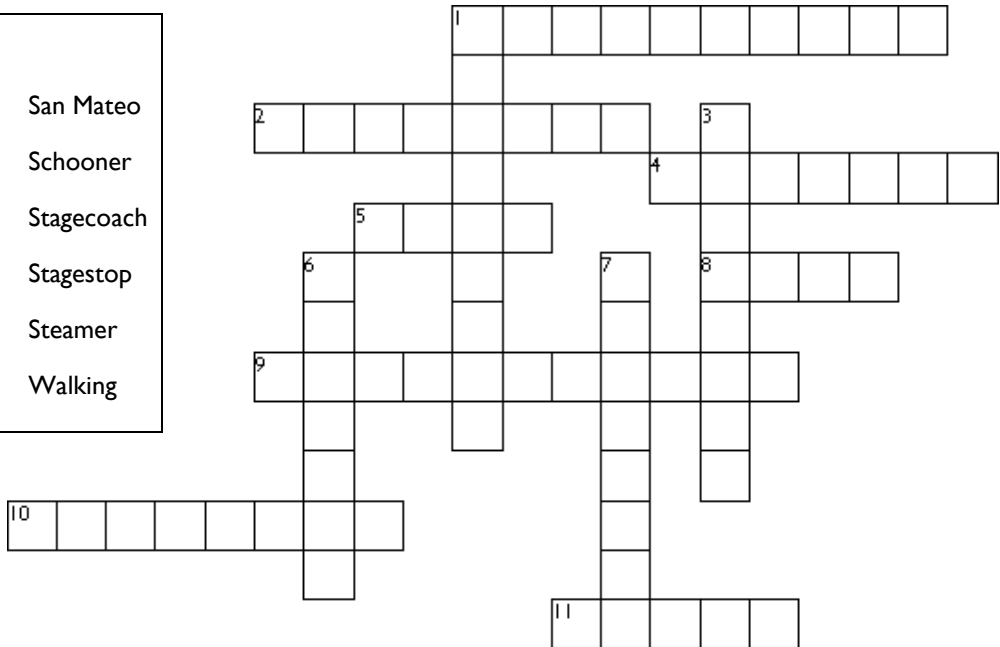
Her husband built the first mansion in San Mateo County. Stories say it was shipped to California in pieces. The Howard family later built other mansions.



Transportation

Use the word list and pictures to learn about how people got from place to place in the 1850s. Then, use the clues to finish the crossword puzzle.

Word List:	
El Camino	San Mateo
Horse	Schooner
Mudwagon	Stagecoach
Mule	Stagestop
Oxen	Steamer
Redwood City	Walking

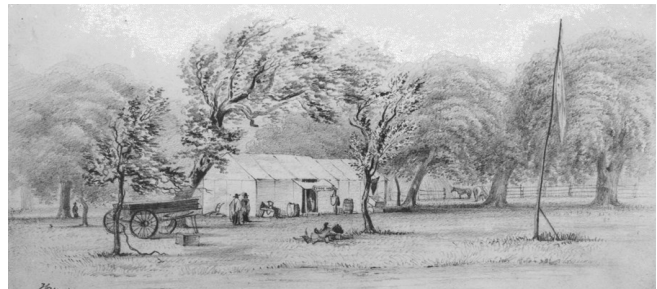


Across

1. A horse-drawn bus.
2. An early type of stagecoach.
4. A way to get around without vehicles or animals.
5. Animals that pulled heavy carts.
8. An animal people rode on rough trails.
9. Town with the largest port for ships to dock.
10. A type of ship used to haul natural resources.
11. An animal many people rode.

Down

1. A place where people could rest during their travels.
3. Halfway between San Francisco and San Jose.
6. A ship with an engine in which people traveled.
7. The main road through the county.

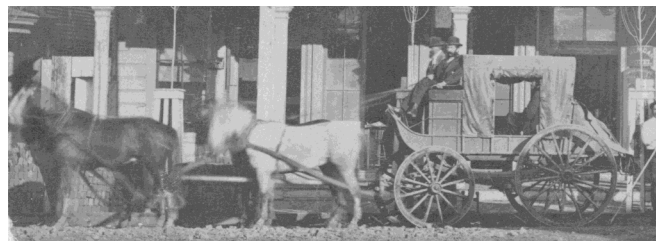


Top to Bottom:

Stagestop at Angelo's Ranch.

Scow schooners moved wood and hay.

Mudwagons are stagecoaches.



Transportation

Help the stagecoach driver find his way from San Francisco to San Jose.

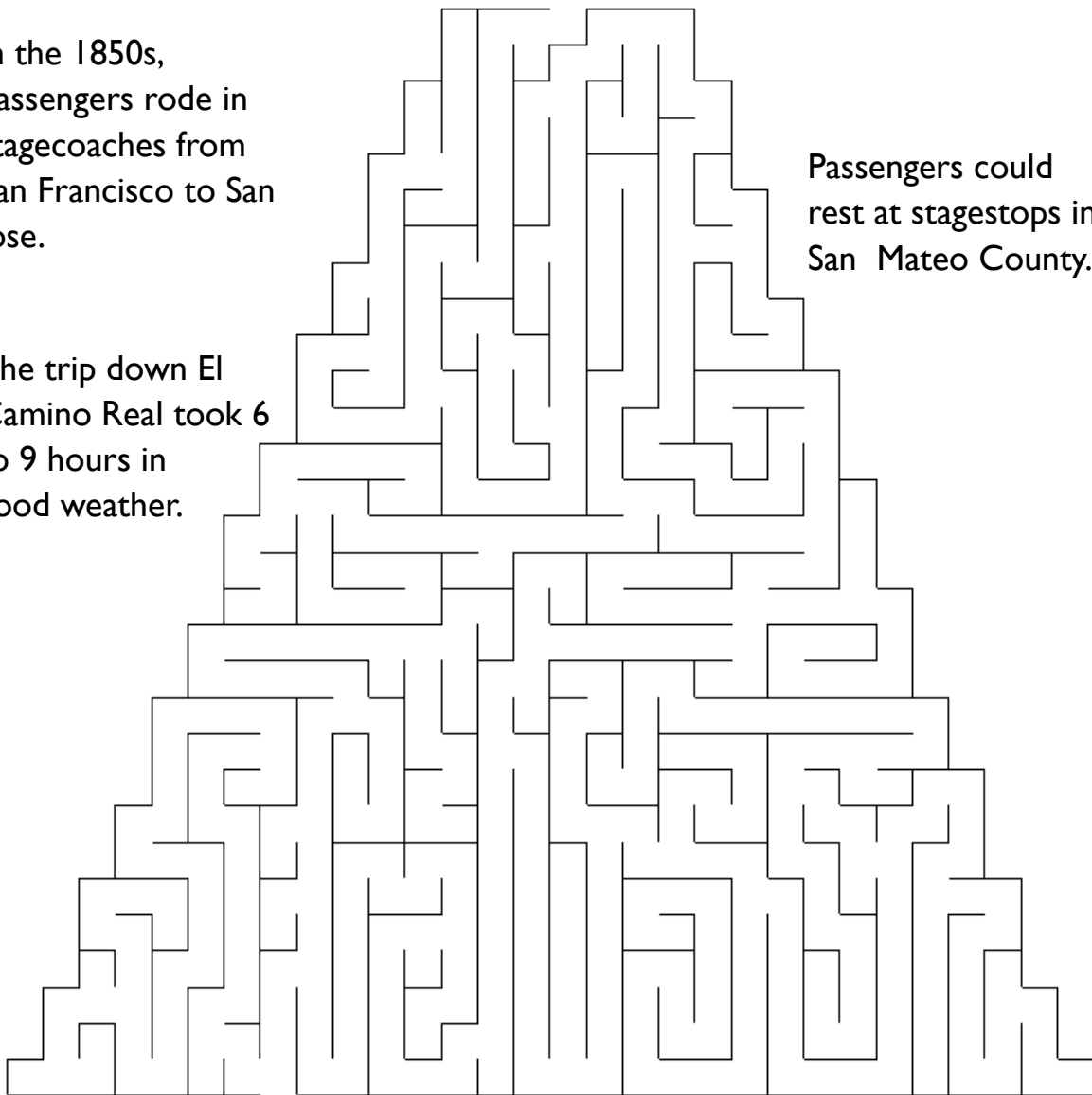


* San Francisco

In the 1850s, passengers rode in stagecoaches from San Francisco to San Jose.

Passengers could rest at stagestops in San Mateo County.

The trip down El Camino Real took 6 to 9 hours in good weather.



* San Jose

Farming

Color the pictures. Then unscramble each word. Use the marked letters to solve the second puzzle.

CRNO

--	--	--	--

2

WEHAT

--	--	--	--	--	--

9

8

CWSO

--	--	--	--

5

REGASP

--	--	--	--	--	--	--

11

1

OTAS

--	--	--	--

14

BNASE

--	--	--	--	--

4

PSEA

--	--	--	--

3

18

RIEC

--	--	--	--

15

10

EPASR

--	--	--	--	--

6

16

17

EAPLSP

--	--	--	--	--	--

7

ESPEH

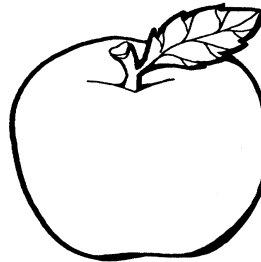
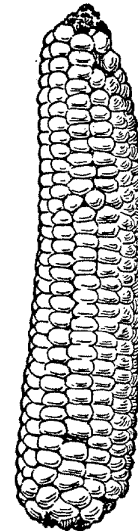
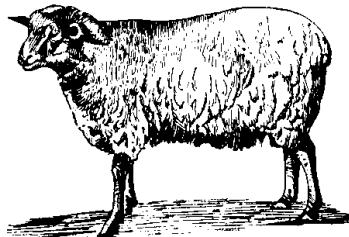
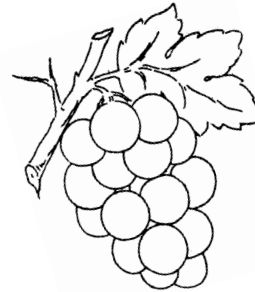
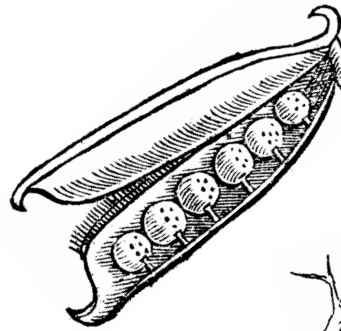
--	--	--	--	--

12

SIFG

--	--	--	--

13



M			y
---	--	--	---

1 2

--	--	--	--	--	--	--	--

3 4 5 6 7 8

--	--	--	--

9 10 11 12

			m				
--	--	--	---	--	--	--	--

13 14 15 16 17 18

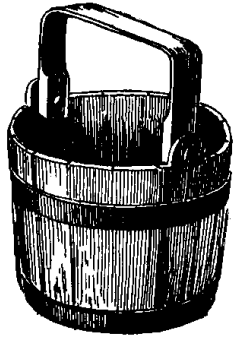


What did farmers grow?

Farming

Put the steps for making butter in order. Write the letter of the step in the blank.

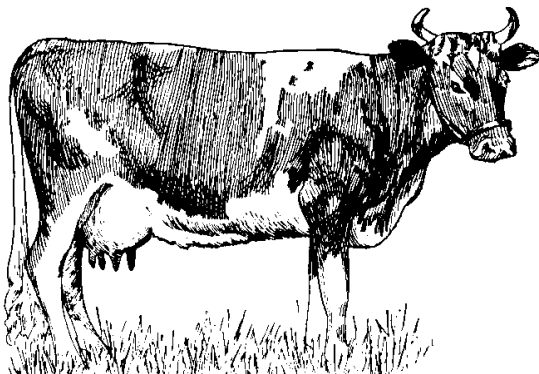
By the late 1850s, San Mateo County dairy farms made 200,000 pounds of butter per year. Most of the butter was sold in San Francisco.



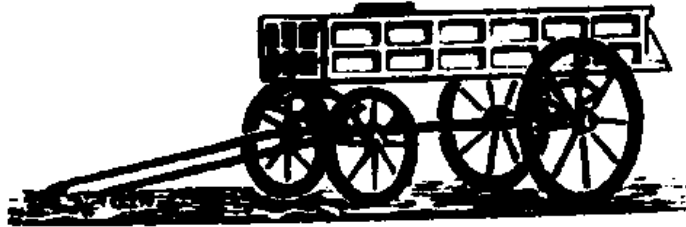
A. Let the milk stand until the cream rises to the top.



D. Skim off the cream from the top of the milk.



F. Milk the cow.

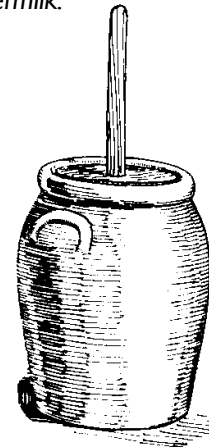


B. Send the butter to market in San Francisco.

Making Butter	
1.	_____
2.	_____
3.	_____
4.	_____
5.	_____
6.	_____
7.	_____
8.	_____



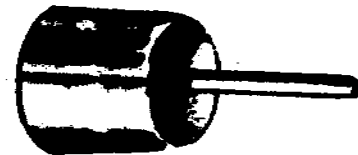
C. Squeeze the butter balls with paddles to take out the buttermilk.



E. Churn the cream until balls of butter form.



G. Wash the butter with water.



H. Mold the clean butter into shapes to put on the table.

Logging

Read the story about logging. Then, find the underlined words from the story in the puzzle.

In the 1850s, redwood was used to build houses for people living in San Francisco and San Mateo Counties.

Loggers cut down the trees. They used many special tools. They wore calked boots with spikes on the bottom so they would not fall. They stood on springboards as they chopped down a redwood tree with an ax.

Teams of oxen wearing yokes pulled logs out of the woods. The oxen and workers traveled down a skid road. The bull whacker used his goad stick to tell the oxen how to move. The grease monkey put grease and water on the road so the logs would slide.

There were many sawmills in the area. Workers used peaveys to roll the logs and peelers to take off the bark. They used a logging dog to hold the log in place while they sawed it. Saws were used to cut the log. They used a branding ax to put the company's logo on the wood.

A logger could make shingles. He would use a mallet to hit a froe that cut the wood. The shingles were used on the roofs of buildings.

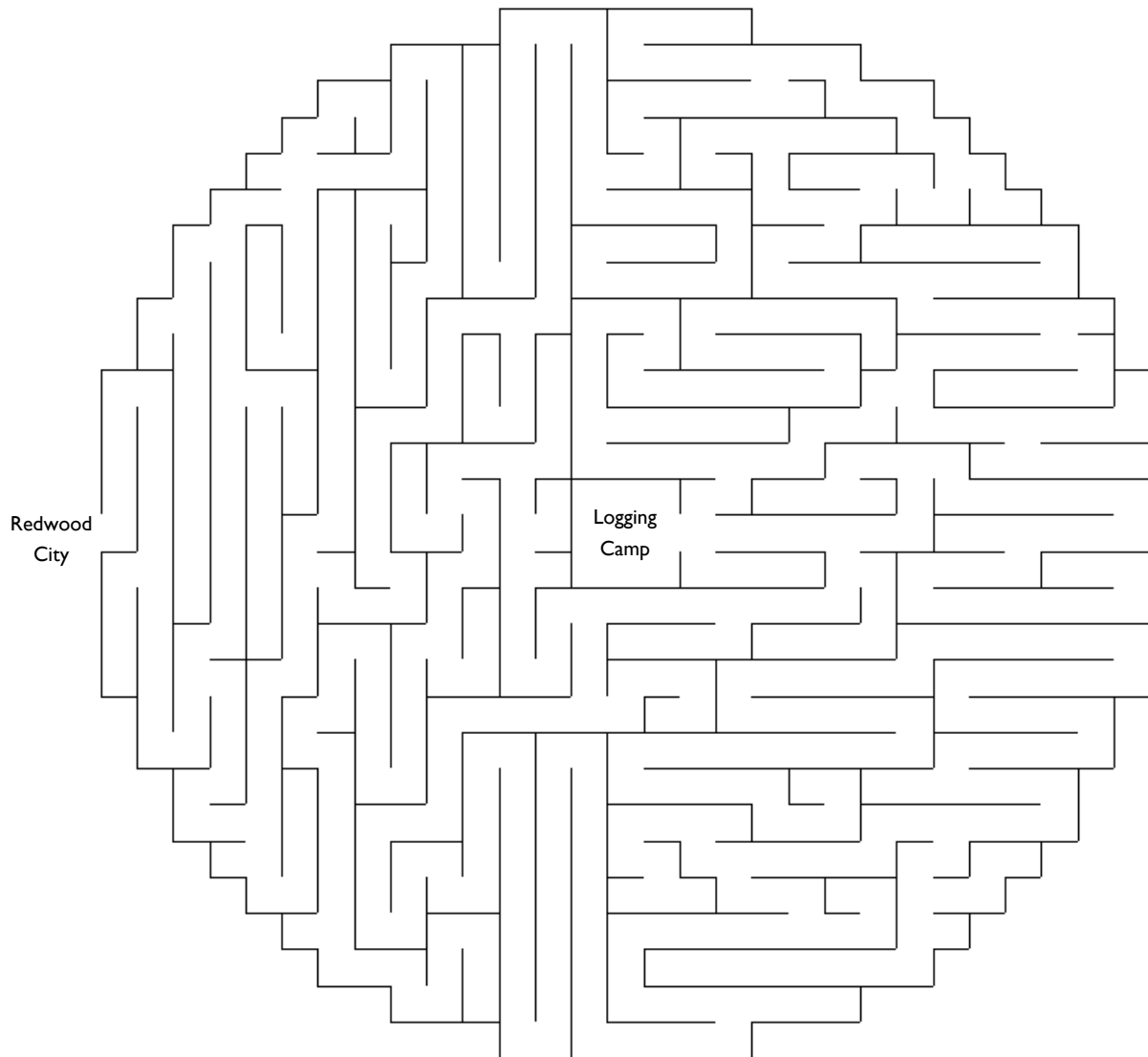


Loggers in the redwoods. Can you find the springboards and 2 axes?

S R E G G O L R K K K E X G S
 P P H P X S E Z C R O M A R H
 G Y R E T D Y I H R A A G E I
 O O N I W A T E F E D B N A N
 S B D O N S F V V P L C I S G
 R A O G D G W K L A A S D E L
 E D W A N S B Z Y L E N N M E
 L V O M E I J O K O U P A O S
 E G A S I T G E A O K Q R N T
 E M U V L L D G Y R C E B K R
 P O O R M B L E O O D H S E E
 H S S G O L X S G L K S U Y E
 O W A O R E K C A H W L L U B
 H A T M A L L E T A X N H G K
 C S B W E I S K I D R O A D D

Logging

Help the loggers find their way out of the woods.



Traveling down a skid road.

How many oxen are pulling the logs?

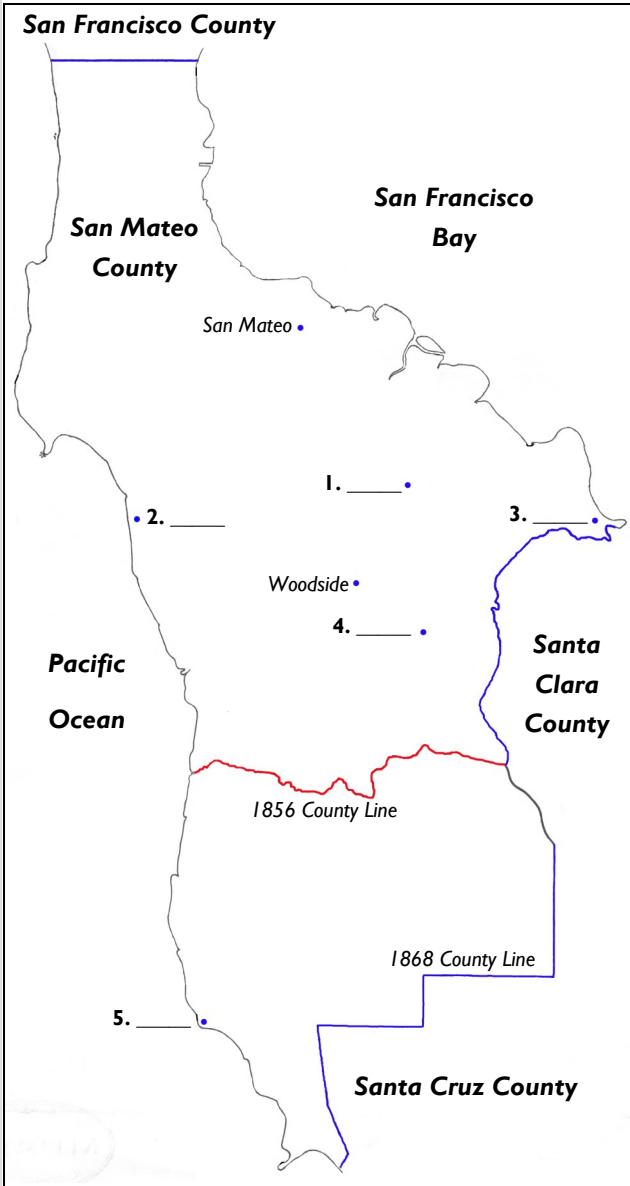
Can you find the Bull Whacker with his goad stick?

Can you find the Grease Monkeys? They are holding pails of grease.



Places

Unscramble the place names. Match them to the description and place the right letter on the map.



Place names can change over time. Look at the descriptions below for hints to unscramble some of the 1850s place names. “Ville” is used at the end of some place names to mean town.

SIMEZLEVEL

--	--	--	--	--	--	--	--	--	--	--	--

OPNIEG PNTOI

--	--	--	--	--	--	--	--	--	--	--	--	--	--	--

ERDWOSNOVA

--	--	--	--	--	--	--	--	--	--	--	--	--	--	--

ESALREILSV

--	--	--	--	--	--	--	--	--	--	--	--	--	--	--

ASWPNSTIHON

--	--	--	--	--	--	--	--	--	--	--	--	--	--	--	--	--

Write the name of the place in the blank.

- A. Named after hotel owner John H. Sears, the settlement is now covered by water. _____
- B. Simon Mezes named the town after himself, but most called it the city with the redwood. _____
- C. In 1853, the ship *Carrier Pigeon* crashed near here. _____
- D. Isaiah Woods named this bayside port after himself and the local birds. Today, it is part of another town. _____
- E. Americans gave this town its name because of all the Hispanics living there. Now, it is named after a bay. _____

Places

Color the picture.



After his fight with a grizzly bear, James Ryder was called Grizzly Ryder and the place where the encounter took place was called Bear Gulch.

Shopping

Color the picture.



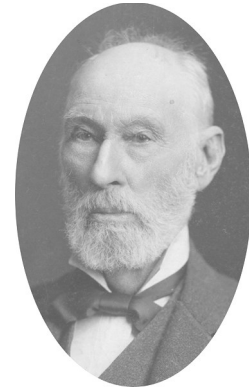
Dr. Robert Tripp and Mathias Parkhurst built the Woodside Store in 1854.

Shopping

Find the words in the "At the Woodside Store" list in the puzzle.

This Week's Specials

Keg of Pickles — \$3.00	Webster Spelling Book — \$1.50
Pair of Boots — \$.75	Pound of Flour — \$2.25
Barrel of Ham — \$11.00	Dozen Peaches — \$7.00
Box of Matches — \$1.75	White Shirt — \$1.00
Keg of Nails — \$8.50	Bag of Walnuts — \$3.00



Dr. Tripp owned the Woodside Store.

P M A T C H E S S W I S L A L
 S E R C S S R L A E A S B X I
 L Z P O O A O L P L T H P S O
 E P A P G M N S M P S A T D E
 W P A I E U B O E E A O L M V
 O I C N T R N S L L O E J S I
 T C R S S W C D V B P D N R L
 S K O O B G N I L L E P S I O
 P L P C P A F A B R I C A B P
 A E E K C S P C Y E A S T B D
 U S A S M O O R B T F L M O O
 M A H C A N D Y K T T I V N O
 S T R I H S X N L U X A N J R
 R U O L F E H X N B X N E K S
 X N P A N T S P U R Y S D T O

At the Woodside Store		
Apples	Nails	Salmon
Boots	Olive Oil	Shirts
Brooms	Knife	Slates
Butter	Matches	Soap
Candles	Pans	Socks
Candy	Pants	Spelling Books
Cigars	Peaches	Syrup
Combs	Pepper	Tea
Doors	Pickles	Towels
Fabric	Pineapple	Walnuts
Flour	Ribbon	Yeast
Ham	Rope	

My Shopping List

- | | | |
|--------------------|-------------------|-----------------|
| 6 white shirts | Dozen Peaches | 2 Kegs of Nails |
| 1 Pair of Boots | Barrel of Ham | Spelling Book |
| 2 Boxes of Matches | 2 Pounds of Flour | Bag of Walnuts |

How much does it cost?

School

Color the picture.

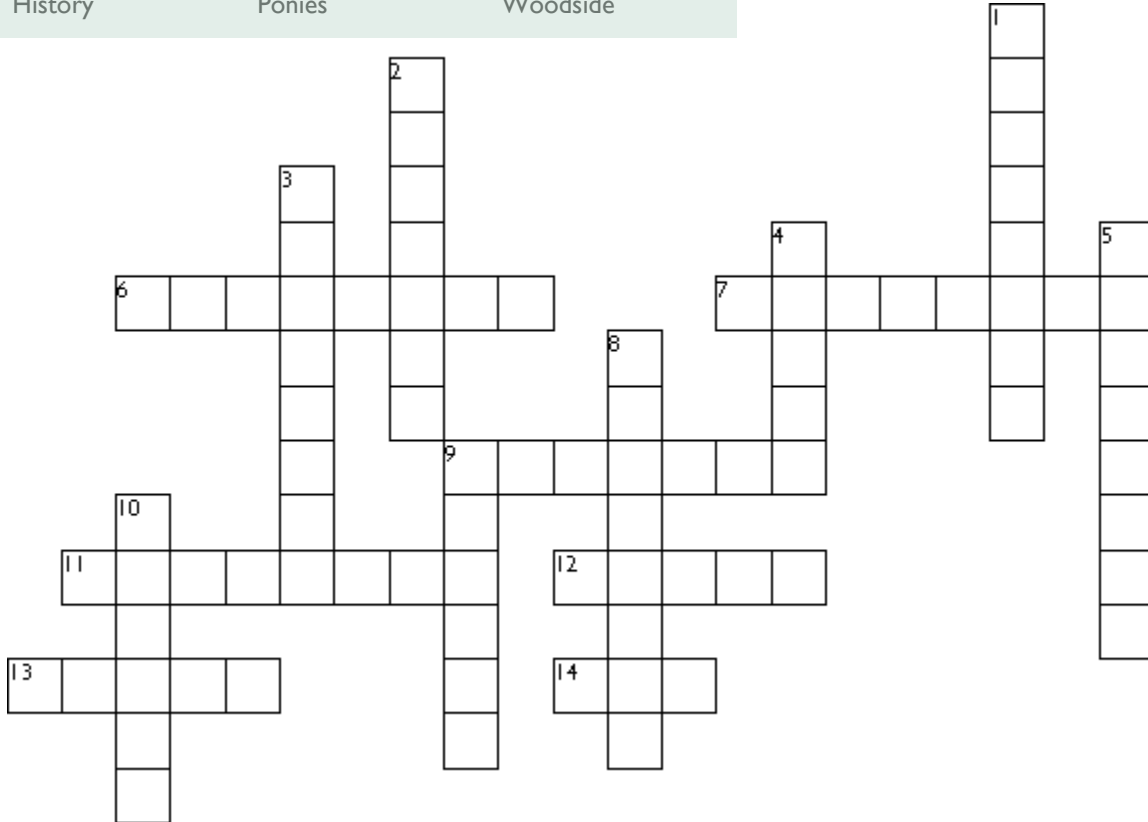
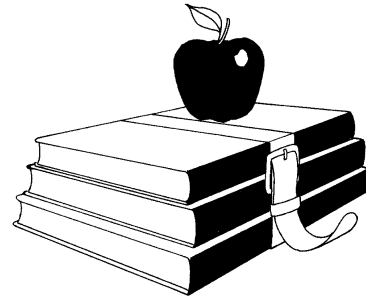


Spelling bees were a popular activity at a one-room school.

School

Use the word list and clues to finish the crossword puzzle.

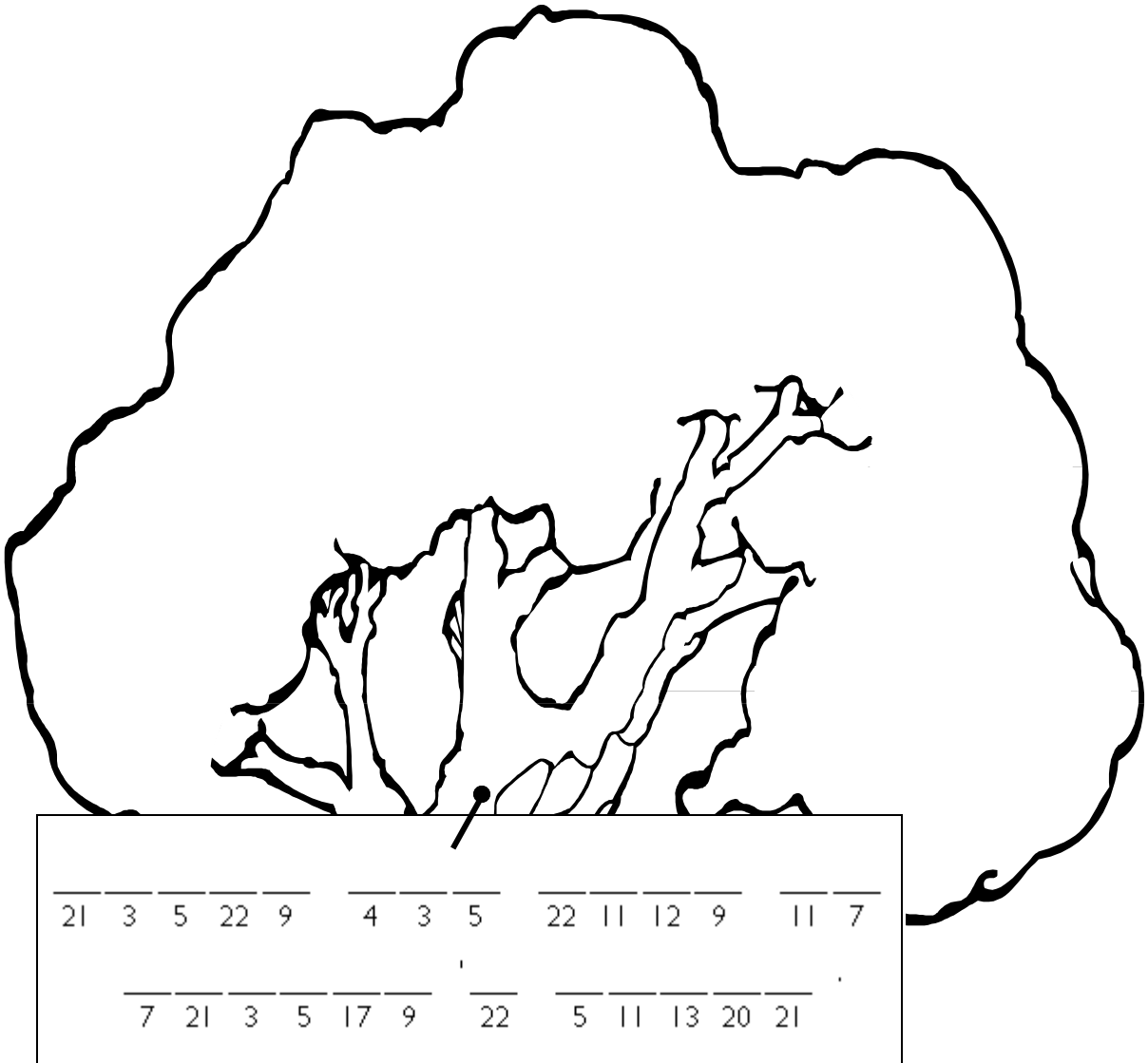
Word List		
Alphabet	Jump Rope	Spelling
Books	March	Slate
Church	One	Speaking
December	Parents	Thirteen
History	Ponies	Woodside



Across	Down
6. A recess game.	1. Program held once a month for parents.
7. The first local school was built in this area.	2. Subject taught by question and answer.
9. People who paid the teacher.	3. First lesson students learned.
11. Number of county teachers by the end of the 1850s.	4. Students shared these with family members.
12. Chalkboard students did their homework on.	5. Month school closed so kids could help plant crops on the farm.
13. Month schools opened after crops were planted.	8. There were contests to see which student knew this subject the best.
14. Number of rooms in most early schoolhouses.	9. Some children rode this animal to school.
	10. Another activity held in the schoolhouse.

Communication

Color the tree. Then, use the code below to discover the message.



Before newspapers and telephones, people left messages on trees near stores and stagestops.

A	B	C	D	E	F	G	H	I	J	K	L	M	N	O	P	Q	R	S	T	U	V	W	X	Y	Z
11	23	20	18	9	4	15	21	10	24	16	12	8	13	3	17	19	5	22	7	26	6	14	2	25	1

Communication

Create your own version of the county's first newspaper.

<h2>San Mateo County Gazette</h2>	
VOL. I REDWOOD CITY, SAN MATEO COUNTY, CALIFORNIA, SATURDAY MORNING, APRIL 9, 1859. NO. I.	
Terms.....\$4 a year, published every Saturday morning	Wm. Godfrey.....Proprietor

In 1859, the county's first newspaper was published. It included news, stories, advertisements, poems and meeting notices. It had no photographs. It did have a few drawings in the advertisements.

After the 1850s

Unscramble the words of inventions that came to San Mateo County after the 1850s. Use the marked letters to solve the second puzzle. Then, match the invention to the picture.



A. First came to county in 1863.

1. ___ EOTPNELEH

13		20		10			2

2. ___ MESIOV

	3	1	17	8

3. ___ OAMSETOBLIU

11						19			4

4. ___ EITCTREYICL

14		12	9						5	16

5. ___ LARDRAIO

	15	6	18			7	



B. First came to county in 1889.

1	2	3	4	2	5	6	7	2	8
w									
17		18	19	3	20				

					g		
9	10	11	2		12		

13	10	14

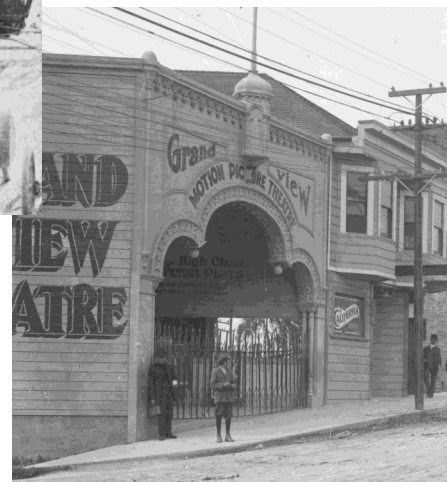
w		
15	16	

C. First came to county about 1878.



D. First came to county about 1900.

E. First came to county about 1900.





SAN MATEO COUNTY
HISTORICAL
ASSOCIATION